

HR, Hot Rolled Steel Coil

Hot rolled steel undergoes a rolling process that involves forming and rolling steel slabs into long, hot bands while heated at extremely high temperatures (typically over 1,700°F) above steels recrystallization temperatures.

Hot rolled steel sheet and coil are basic carbon steel products commonly used for applications in which dimensional tolerances and surface finish quality are not critical, such as: Agriculture Equipment, Automobile Accessories, Automotive Frames, Construction, Pipe and Tubular, Railroad Tracks, Strappings, Stampings, Transportation Infrastructure.

Grade Available	SPHC, SAE1006/1008, Q195, SS400, Q235, A36, S235JR, S275JR, Q345, Gr50, SPHT1/2, SM400,etc.
Standard Related	JIS G3101/3131/3132/3106, GB T700/1591, ASTM A36/A572, EN 10025-2,etc.
Sizes Available	Thickness:1.0~2.5mm Width:300~2000mm
Product Type	HRC for General use, for pipe-making, for Cold-rolling, for Welded Structure, HSLA, Checkered Sheet, etc.
Product Application	Raw Material for Construction & Engineering, CR Steel Production, Pipe Making, Steel Structure, Vehicle & Vessel Manufacturing,etc.



CR, Cold Rolled Steel Coil

Cold rolled steel is rolled at room temperature and then rolled again below its recrystallization temperature. This process enables better control over finished product shape, thickness, dimensions, and a more consistent finish.

Grade Available	SPCC,SPCD,DC01,DC03,St12,St13.CS/DS Type A/B,etc
Standard Related	JIS G3141, GB T5213, ASTM A1008, EN 10130,etc.
Sizes Available	Thickness:0.12~2.0mm Width:600~1500mm
Material Hardness	Full,1/2.1/4,1/8,or as per HRB Range.
Product Type	CRC for General Use,Black Annealed CRC,Fell Hard CRC,etc
Product Application	Raw Material for Coated Steel, Pipes, Furniture, Home Appliance,Automotive Industry,etc



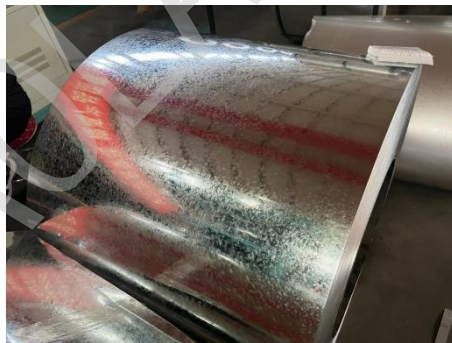
Main Optional grades and standards

Product Name	Grade	Yield Strength (Mpa)	Tensile strength (Mpa)	Elongation after breaking (%)
Martensitic high strength steel	CR780/980MS	≥780	≥980	≥10
Wet enamel	DC01-TC	≤260	270-370	≥35
	GT340-TC	≥340	≥400	≥22
Dry enamel	GTC1	≤220	270-350	≥38
Low-carbon steel	DC01	≤270	≤370	≥35
	DC03	≥190	≥270	≥41
Gapless atomic steel	DC04	≤165	≥270	≥43
	DC06	≤150	≥270	≥44

GI, Hot Dipped Galvanized Steel Coil

Galvanized steel, the cold rolled steel roll continuously immersed in the molten zinc plating bath, the surface fusion it a layer of zinc anti-corrosive materials in 470 degree Centigrade heat. it is a steel based composite material, effectively prevent the corrosion of steel, to extend the service life, with excellent corrosion resistance, good surface quality is conducive to deep processing, economical and practical.

Grade Available	SGCC, SGCH, SGHC, DX51/52/53D, St12, CS/FS, SGC340/400/440 SGH340/400/440, S220/250/280/320/350GD, SS33/40/50, etc.
Standard Related	JIS G 3302, GB T2518, ASTMA653, EN 10346, etc.
Sizes Available	Thickness: 0.12~3.0mm Width: 600~1500mm
Spangle Type	Zero Spangle, Mini/Small Spangle, Regular Spangle, Big Spangle.
Surface Treatment	Oiled, Chromated, Skin-pass, Matt/Bright, etc
Material Hardness	Full Hard (>HRB85). Medium Hard (HRB60-85), Soft (<HRB60), etc.
Product Application	Raw Material for Color-Coated Industry, Pipe-Making. C/Z Purlins, Decking Sheet, Corrugated Sheet, Household Appliance, Furniture Transportation Facility, etc.



Main Optional grades and standards

Product Category	Brand	Mechanical properties			Uses and characteristics
		Yield Strength MPa	Tensile strength MPa	Elongation %	
Soft	SPCC	260-300	350-400	30	Mechanical bite, general stamping, high corrosion resistance
	SPCD	210-260	280-350	40	
Full Hard	SPHC	≤450	≤700	-	Construction, good processing, high corrosion resistance
	Q195L	≥450	≤700	-	

GL, Galvalume Steel Coil

Galvalume (abbreviation:GL steel) is hot plating on the surface of steel plate with Al55%,Zn43.5%,Si 1.5% ,the surface is smooth,has a good resistance to atmospheric corrosion,heat resistant oxidation.

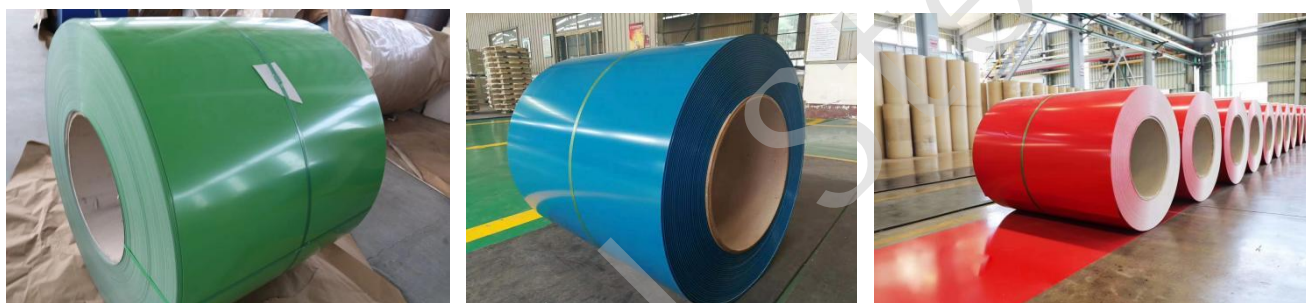
Grade Available	SGLCC,SGLCD,DX51/52/53D+AZ,CS/FS,SGLC340/400/440, S220/250/280/320/350GD+AZ,SS33/40/50,etc.
Standard Related	JIS G3321,GB T14978,ASTMA792,EN 10346,etc.
Sizes Available	Thickness:0.15~1.5mm Width:600~1500mm
Surface Treatment	Oiled, Passivated (Non-Cr/ Cr3+), Skin-pass, Matt ,Anti-finger print,etc.
Material Hardness	Full Hard(>HRB85), Medium Hard(HRB60-85), Soft (<HRB60),etc
Product Application	Raw Material for PPGL,Corrugated Sheet,Household Appliance, Agricultural facilities, Automotive Industry etc.



Product Name	Grade	Yield Strength (Mpa)	Tensile strength (Mpa)	Elongation after breaking (%)
Low-carbon steel	DX51D+AZ	≤360	≤440	≥20
	DX52D+AZ	≤260	300-360	≥28
Gapless atomic steel	DX53D+AZ	≤200	270-320	≥38
	DX54D+AZ	≤180	270-310	≥40
Structural steel	S250GD+AZ	≥250	≥330	≥19
	S350GD+AZ	≥350	≥420	≥16
	S450GD+AZ	≥450	≥510	≥14
	S550GD+AZ	≥550	≥560	/
Special material for keel	LG550GD+AZ	≥550	≥560	≥5

PPGI, Pre Painted Steel Coil

Pre Painted Steel Coil is based on galvanized coil, galvalume coil, zinc-aluminum-magnesium, aluminum-zinc-magnesium, aluminum-magnesium-manganese, stainless steel as the substrate, after surface pretreatment, using a roller coating method, coated with multiple layers of liquid paint, after baking Bake and cool. It uses polyester, silicon-modified polyester, high-weather-resistant polyester, polyvinylidene fluoride, epoxy, and high-sealing corrosion-resistant coatings. It has excellent durability, corrosion resistance, and moldability (formability). Products are widely used in household appliances, decoration, construction, automotive and other industries.



Type of coating	Recommended substrate type	Coating thickness (μm)	MEK	T bend	5%hydrochloric acid	5%Sodium hydroxide	Neutral salt spray	Acid salt spray	Alkaline salt spray	QUV-A	Common environment
Polyester (PE)	Z/AZ/ZM/AZM	≥20	≥100	3T	24 h	24 h	1000 h	/	/	1000 h	10 year
High weather resistance (HDP)	Z/AZ/ZM/AZM	≥23	≥100	3T	24 h	24 h	1500 h	/	/	1500 h	15 year
Silicon Reform (SMP)	Z/AZ/ZM/AZM	≥23	≥100	3T	24 h	24 h	1500 h	/	/	1500 h	15 year
Fluorocarbon (PVDF)	Z/AZ/ZM/AZM	≥25	≥100	2T	24 h	24 h	2000 h	/	/	3000 h	20~30 year
Polyurethane (PU)	Z/AZ/ZM/AZM	≥40	≥100	2T	24 h	24 h	720 h	/	/	1000 h	10~20 year
Hot film (VCM)	Z/AZ/ZM/AZM	≥100	/	0T	360 h	/	/	/	/	/	10 year
Color printing	Z/AZ/ZM/AZM	≥25	≥100	3T	24 h	24 h	600 h	/	/	1000 h	10 year
Reticulated, suede	Z/AZ/ZM/AZM	≥25	≥100	2T	24 h	24 h	1000 h	/	/	1000 h	10 year
High corrosion-resistant polyester (PE•Pro)	Z/ZM/AZM	≥25	≥1000	3T	120 h	120 h	2000 h	1500 h	1500 h	2000 h	15 year

Type of coating	Recommended substrate type	Coating thickness (μm)	MEK	T bend	5%hydrochloric acid	5%Sodium hydroxide	Neutral salt spray	Acid salt spray	Alkaline salt spray	QUV-A	Common environment
High corrosion resistance and weather resistance polyester (HDP•Pro)	Z/ZM/AZM	≥25	≥ 1000	3T	120 h	120 h	2500 h	2000 h	2000 h	3000 h	20 year
Super corrosion resistant super weather resistant polyester (HDP•Plus)	Z/ZM/AZM	≥30	≥ 1000	3T	360 h	360 h	4000 h	3000 h	3000 h	4000 h	25 year
High corrosion resistance fluorocarbon aluminum magnesium manganese (PVDF•Pro)	Aluminum magnesium manganese	≥25	≥ 1000	2T	240 h	240 h	10000 h	5000 h	5000 h	10000 h	50 year
Super corrosion-resistant nano-fluorocarbon aluminum magnesium manganese (PVDF•Plus)	Aluminum magnesium manganese	≥30	≥ 1000	2T	480 h	480 h	20000 h	10000 h	10000 h	15000 h	70 year
Centennial stainless steel fluorocarbon (PVDF•Plus)	Stainless steel	≥30	≥ 1000	2T	480 h	480 h	30000 h	10000 h	10000 h	15000 h	100 year
High corrosion-resistant epoxy back paint	/	≥12	≥100	4T	120 h	120 h	2000 h	1500 h	1500 h	/	/
Super corrosion-resistant epoxy back paint	/	≥20	≥100	3T	240 h	240 h	3000 h	2500 h	2500 h	2000 h	/

Hot Rolled Steel Sheet

Hot rolled steel and sheet metal products are commonly used for industrial applications worldwide. With a wide range of options, HR plate and sheet metal products provide numerous advantages that other metal products cannot replicate.



Main Standard	GB/T700 standard : Q235A,Q235B,Q235C,Q235D,Q235E EN10025 standard : S235JR,S235J0,S235J2 DIN 17100 standard : St33,St37-2,Ust37-2,RSt37-2,St37-3 DIN 17102 standard : StE255,WstE255,TstE255,EstE255 ASTM standard : A36/A36M A36 A283/A283M A283 Grade A,A283 Grade B A283 Grade C,A283 Grade D A573/A573M A573 Grade 58, Grade 65,Grade 70
Material	Carbon steel :Q195-Q420 Series,SS400-SS540 Series,S235JR-S355JR Series,ST Series,A36-A992 Series,Gr50 Series,etc.
Surface	Mild steel plain finish, hot dip galvanized, color coated, etc.
Size Tolerance	±1%-3%
Processing method	Bending, Welding, Decoiling, Cutting, Punching, Polishing or as customer's request
Size	Thickness from 0.1mm-5000mm, width from 0.5mm-5m, length from 1m-12m or according to customer's special request
Technology	Hot roll, cold roll, cold drawn, etc.
Weight Calculation	Weight(kg)=Thickness(mm)*Width(m)*Length(m)*Density(7.85g/cm3)

Cold Rolled Steel Sheet

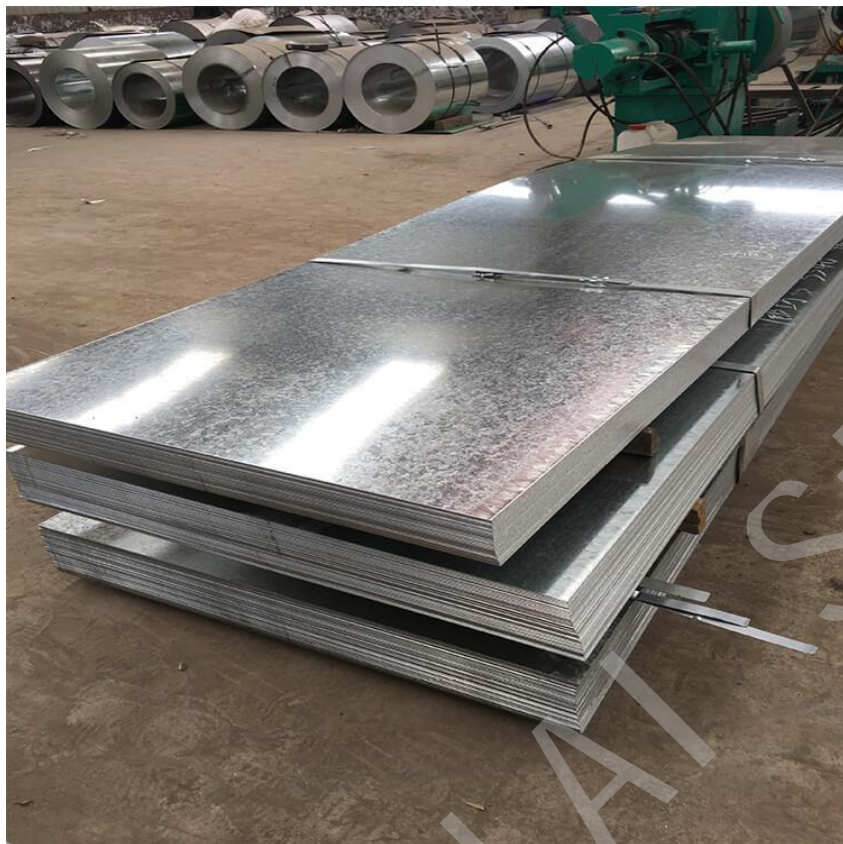


Cold rolled steel sheet is, essentially, hot rolled steel that has been further processed to increase its strength and strength-to-weight ratio. Generally, cold rolled steel sheet can hold tighter tolerances than hot rolled when machined or otherwise fabricated, providing a better overall

surface finish. This premium steel product is manufactured from steel alloy materials, providing a smooth, clean surface ideal for various industries, including structural, automotive, furniture, and more.

Thickness	Width	Length	Weight (lbs/ft)
24ga	48.00"	120.00"	0.999
24ga	48.00"	96.00"	0.999
22ga	48.00"	120.00"	1.250
22ga	48.00"	96.00"	1.250
20ga	48.00"	120.00"	1.500
20ga	48.00"	96.00"	1.500
20ga	60.00"	120.00"	1.500
18ga	48.00"	120.00"	2.000
18ga	48.00"	96.00"	2.000
16ga	48.00"	120.00"	2.500
16ga	48.00"	96.00"	2.500
16ga	60.00"	120.00"	2.500
14ga	48.00"	120.00"	3.125
14ga	48.00"	96.00"	3.125
14ga	60.00"	120.00"	3.125
12ga	48.00"	120.00"	4.375
12ga	48.00"	96.00"	4.375
11ga	48.00"	120.00"	5.000
11ga	48.00"	96.00"	5.000

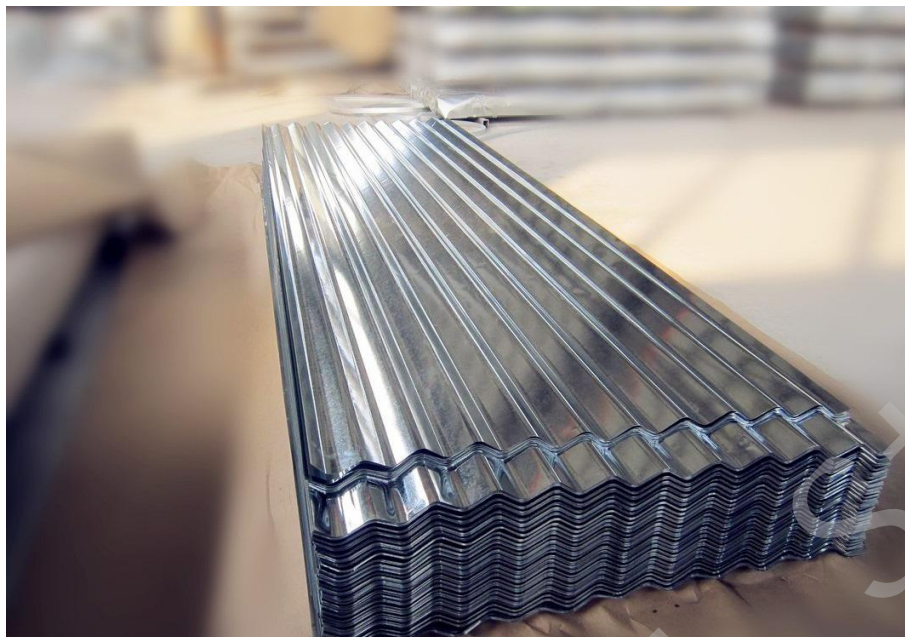
Galvanized Steel Sheet



Galvanized sheet metal and plate are regularly used in applications where corrosion resistance is necessary. Flat galvanized sheet and plate are easy to drill, form and weld. They also provide a lifespan of 20 years or more, depending on the application. Additionally, galvanized sheet and plate offer a long service life at moderate temperatures.

Standards	JIS G3302, ASTM A653M, EN10327, DIN 17162, EN 10142, EN 10147, EN 10292, JIS G3302
Material	DX51D+Z, DX52D+Z, DX53D+Z, DX54D+Z, S220GD+Z, DX51D+Z/SGCC/A653, etc
Zinc Coating	40-600g/m ²
Width	1000mm, 1219mm, 1250mm, 1500mm or customized as required
Thickness	0.1-6.5mm or customized as required
Surface Finish	Regular spangle, Big spangle, minimum spangle, zero spangle

Galvanized Corrugated Plate



Baolai Steel carries corrugated metal panels for roofing, flooring, and siding. These corrugated panels are made of rippled metal sheets, one of the most commonly used panels in the industry. Corrugated sheet metal is a tough material, light weight, weather resistant, and practical for many different uses. We specialize in manufacturing top quality corrugated materials for metal roofing, metal siding, corrugated metal decking, and corrugated metal flooring for almost any application.

Material	GI, GL, PPGI, PPGL
Thickness	0.13-0.8MM
Length	As your request
Tolerance	+/-0.02mm
Zinc Coating	40-275g/m ²
Surface treatment	unoiil, dry, chromate passivated, non-chromate passivated
Spangle	regular spangle, minimal spangle, zero spangle, big spangle
Popular Size	Raw material 762mm to 680, 670, 660, 655, 650 mm(after corrugated) and 9 waves; Raw material 914mm to 815, 810, 790, 780mm(after corrugated) and 11 waves; Rawmaterial 1000mm to 930, 915, 910, 905, 900, 880, 875mm(after corrugated) and 12 or 14 waves

PPGI Corrugated Plate



Corrugated color roof is a kind of lightweight, strong, and anti-corrosion building material. It is made of color coated steel and designed into different styles, such as wavy, trapezoidal ribbed, tile, etc. Also, our corrugated steel roofing sheets are available in many colors and sizes. Our color-coated roofing sheets are ideal for a wide range of applications, such as garages, industrial workshops, agricultural buildings, barns, garden sheds, etc. You can use it as a new roof, as well as an over-cladding of an existing roof.

Standard:	ASTM	Thickness:	0.11-4.75mm, 0.11-4.75mm
Length:	1400-1799mm, 1800-2000mm, 2001-3600mm, 3601-3660mm, 1.8-5meters or as client's request	Width:	600-1500 mm
Grade:	SGCC/CGCC/TDC51DZM/TDC52DT S350GD/TS550GD/DX51D+Z	Certificate:	CE, SNI, SONCAP, tisi, ISO9001, SGSBV
Material:	SGCC/CGCC/TDC51DZM/TDC52DT S350GD/TS550GD/DX51+Z	Coating:	Z41-Z60
Zinc Coating:	62g/m ² -275g/m ²	Processing Service:	Welding, Punching, Cutting, Bending, Decoiling
Color:	Red, blue, white or any other Ral Color	Surface:	galvanized coating
Surface treatment:	chromated, passivation treatment, oiling	Shape:	Wave