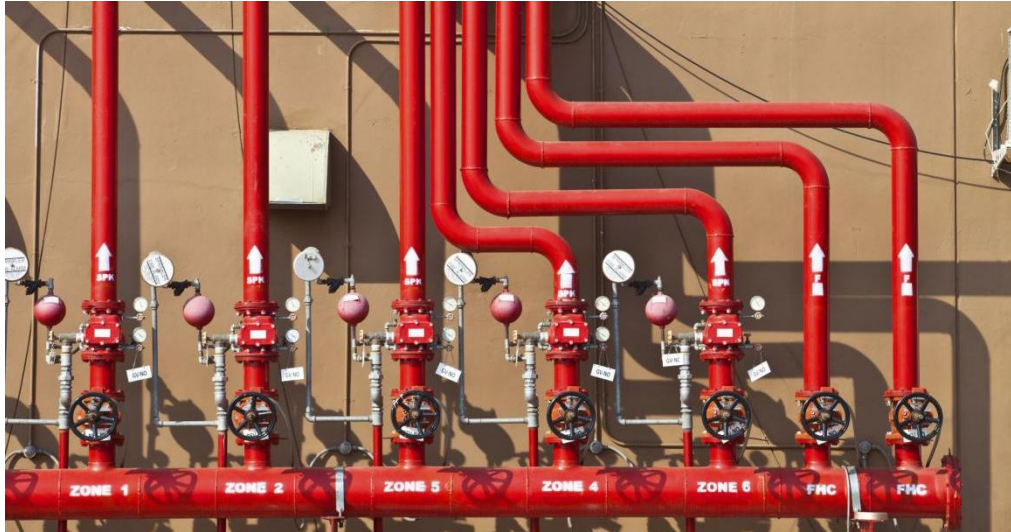


BAOLAI FIRE SPRINKLER PIPES



UL listed and FM approved BAOLAI fire protection pipes offer the most suitable products to its customers; black, galvanized, primer varnished, epoxy coating options and roll grooving, threading & coupling or beveled finishing.

EN FM & UL

	OD (mm)	Wall Thickness (mm)	FM	UL
Light Wall	33.7	2.0	✓	
	33.7	2.6	✓	
	42.4	2.0	✓	
	42.4	2.3	✓	
	42.4	2.6	✓	
	48.3	2.0	✓	
	48.3	2.6	✓	
	60.3	2.0	✓	
	60.3	2.9	✓	
	76.1	2.18	✓	
	76.1	2.9	✓	
	88.9	2.36	✓	
	88.9	3.2	✓	
	114.3	2.6	✓	
	114.3	3.6	✓	
139.7	3.4	✓		

	OD (mm)	Wall Thickness (mm)	FM	UL
EN 10255 Medium	33.7	3.2	✓	
	42.4	3.2	✓	✓
	48.3	3.2	✓	✓
	60.3	3.6	✓	✓
	76.1	3.6	✓	✓
	88.9	4.0	✓	✓
	114.3	4.5	✓	✓
139.7	5.0	✓	✓	
165.1	5.0	✓	✓	

	OD (mm)	Wall Thickness (mm)	FM	UL
EN 10255 Heavy	21.3	3.2	✓	
	26.9	3.2	✓	
	33.7	4.0	✓	
	42.4	4.0	✓	
	48.3	4.0	✓	
	60.3	4.5	✓	
	76.1	4.5	✓	
	88.9	5.0	✓	
	114.3	5.4	✓	
	139.7	5.4	✓	
165.1	5.4	✓		

ASTM FM & UL

	Nominal Sizes (inch)	OD (mm)	Wall Thickness (inch)	Wall Thickness (mm)	Weight (lb/ft)	Weight (kg/mt PE)	FM	UL
Light Wall	1"	33.4	0.102	2.60	1.34	1.99	✓	
	1 1/4"	42.2	0.091	2.30	1.53	2.27	✓	
	1 1/4"	42.2	0.102	2.60	1.71	2.55	✓	
	1 1/2"	48.3	0.102	2.60	1.97	2.93	✓	
	2"	60.3	0.114	2.90	2.76	4.10	✓	
	2 1/2"	73	0.114	2.90	3.52	5.23	✓	
	3"	88.9	0.126	3.20	4.54	6.76	✓	
	4"	114.3	0.142	3.60	6.60	9.83	✓	
	5"	141.3	0.134	3.40	7.68	11.43	✓	
	1"	33.4	0.079	2.00	1.05	1.56	✓	
SCH 7	1 1/4"	42.2	0.079	2.00	1.34	1.99	✓	
	1 1/2"	48.3	0.084	2.13	1.53	2.28	✓	
	2"	60.3	0.084	2.13	1.93	2.88	✓	
	2 1/2"	73	0.086	2.18	2.67	3.97	✓	
	3"	88.9	0.093	2.36	3.38	5.04	✓	
4"	114.3	0.108	2.60	4.81	7.16	✓		
SCH 10	3/4"	26.7	0.083	2.11	0.86	1.28	✓	✓
	1"	33.4	0.109	2.77	1.41	2.09	✓	✓
	1 1/4"	42.2	0.109	2.77	2.69	3.91	✓	✓
	1 1/2"	48.3	0.109	2.77	2.09	3.11	✓	✓
	2"	60.3	0.109	2.77	2.64	3.93	✓	✓
	2 1/2"	73	0.120	3.05	3.53	5.26	✓	✓
	3"	88.9	0.120	3.05	4.34	6.46	✓	✓
	3 1/2"	101.6	0.120	3.05	4.98	7.41	✓	✓
	4"	114.3	0.120	3.05	5.62	8.37	✓	✓
	5"	141.3	0.134	3.4	7.78	11.58	✓	✓
	6"	168.3	0.134	3.4	9.30	13.85	✓	✓
	8"	219.1	0.188	4.78	16.96	25.26	✓	✓
	10"	273.1	0.188	4.78	21.23	31.62	✓	✓
12"	323.8	0.188	4.78	25.28	37.61	✓	✓	
SCH 30	1"	33.4	0.114	2.9	1.46	2.18	✓	
	1 1/4"	42.2	0.117	2.97	1.93	2.87	✓	
	1 1/2"	48.3	0.125	3.18	2.37	3.53	✓	
	2"	60.3	0.125	3.18	3.00	4.48	✓	
	2 1/2"	73	0.168	4.78	5.40	8.04	✓	
	3"	88.9	0.168	4.78	6.65	9.92	✓	
	3 1/2"	101.6	0.168	4.78	7.65	11.41	✓	
	4"	114.3	0.168	4.78	8.66	12.91	✓	
	8"	219.1	0.277	7.04	24.70	36.81	✓	
	10"	273.1	0.307	7.8	34.24	51.03	✓	
	12"	323.8	0.33	8.38	43.77	65.20	✓	
SCH 40	1/2"	21.3	0.109	2.77	0.85	1.27	✓	✓
	3/4"	26.7	0.113	2.87	1.13	1.69	✓	✓
	1"	33.4	0.133	3.38	1.68	2.50	✓	✓
	1 1/4"	42.2	0.140	3.56	2.27	3.39	✓	✓
	1 1/2"	48.3	0.145	3.68	2.72	4.05	✓	✓
	2"	60.3	0.154	3.91	3.66	5.45	✓	✓
	2 1/2"	73	0.203	5.16	5.80	8.64	✓	✓
	3"	88.9	0.216	5.49	7.58	11.29	✓	✓
	3 1/2"	101.6	0.226	5.74	9.12	13.58	✓	✓
	4"	114.3	0.237	6.02	10.80	16.09	✓	✓
	5"	141.3	0.258	6.55	14.63	21.79	✓	✓
	6"	168.3	0.280	7.11	18.99	28.29	✓	✓
8"	219.1	0.322	8.18	30.45	45.34	✓	✓	
10"	273.1	0.365	9.27	40.52	60.29	✓	✓	
SCH 80	1/2"	21.3	0.147	3.73	1.09	1.62	✓	
	3/4"	26.7	0.154	3.91	1.47	2.20	✓	
	1"	33.4	0.179	4.55	2.19	3.25	✓	
	1 1/4"	42.2	0.191	4.85	3.03	4.49	✓	
	1 1/2"	48.3	0.200	5.08	3.65	5.39	✓	
	2"	60.3	0.218	5.54	5.08	7.55	✓	
	2 1/2"	73	0.276	7.01	7.75	11.52	✓	
	3"	88.9	0.300	7.62	10.35	15.39	✓	
	3 1/2"	101.6	0.318	8.08	12.67	18.82	✓	
	4"	114.3	0.337	8.56	15.20	22.60	✓	
	5"	141.3	0.375	9.52	21.04	31.42	✓	
	6"	168.3	0.432	10.97	28.88	43.05	✓	
	8"	219.1	0.500	12.70	44.00	65.41	✓	

Welded steel pipe

Welded steel pipe is formed by rolling plate and welding the seam. There are ERW, LSAW and SSAW production processes. And we mainly supply HFW (High frequency welding) of ERW pipe. ERW steel pipe is cost-effective pipe with precise dimension and light weight. It is mainly used to convey fluid at low and medium pressures ambient, such as water line (cold&hot), firefighting pipeline, HVAC line,etc.



BAOLAI provides ERW steel pipe for fire fighting as standard:

- **ASTM A53** Standard Specification for Pipe, Steel, Black and Hot-Dipped, Zinc-Coated, Welded and Seamless
- **ASTM A795** Standard Specification for Black and Hot-Dipped Zinc-Coated (Galvanized) Welded and Seamless Steel Pipe for Fire Protection Use
- **ASTM A135** Standard Specification for Electric-Resistance-Welded Steel Pipe
- **BS 1387:1985** Specification for Screwed and socketed steel tubes and tubulars and for plain end steel tubes suitable for welding or for screwing to BS 21 pipe threads
- **EN 10255:2004** Non-alloy steel tubes suitable for welding and threading
- **EN 10224:2002** Non-alloy steel tubes and fittings for the conveyance of water and other aqueous liquids
- **EN10217-1** Non-alloy steel tubes with specified room temperature properties
- **EN10217-2** Electric welded non-alloy and alloy steel tubes with specified elevated temperature properties

ASTM A53 ERW steel pipe

ASTM A53 ERW steel pipe is formed by rolling strip and welding the seam, with precise dimension and light weight. It is largely used to convey fluids at low/ medium pressures such as oil, gas, steam, water, air and also for mechanical applications.



- **Standard:** UL Listed/ FM Approved
- **Certificate:** ASTM A53, Type E, Grade B/ UL 852
- **Length:** 6m/ 5.8m/ 11.8m/ 12m,customized
- **End:** Plain (square cut)/ beveled to 30°/ roll groove as AWWA C606/ NPT thread as ANSI B1.20.1/ BSPT as ISO 7-1
- **Surface:** Red paint/ red epoxy resin or polyester/ hot dip galvanized/ black paint, etc.

Available size for Sch10 pipe

Size			Thickness	Mass	Test pressure	Ref. No.
NPS	DN	OD (mm)	T(mm)	kg/m	MPa	
1/2"	15	21.3	2.11	1.00	4.8	P0101(ISO)
3/4"	20	26.7	2.11	1.28	4.8	P0102(ISO)
1"	25	33.4	2.77	2.09	4.8	P0103(ISO)
1-1/4"	32	42.2	2.77	2.69	9.0	P0104(ISO)
1-1/2"	40	48.3	2.77	3.11	9.0	P0105(ISO)
2"	50	60.3	2.77	3.93	13.2	P0106(ISO)
2-1/2"	65	73.0	3.05	5.26	12.0	P0107(ISO)
3"	80	88.9	3.05	6.46	9.9	P0108(ISO)
4"	100	114.3	3.05	8.37	7.7	P0109(ISO)
5"	125	141.3	3.40	11.56	6.9	P0110(ISO)
6"	150	168.3	3.40	13.83	5.8	P0111(ISO)
8"	200	219.1	3.76	19.97	4.9	P0112(ISO)
10"	250	273.0	4.19	27.78	4.4	P0113(ISO)
12"	300	323.8	4.57	35.98	4.1	P0114(ISO)
14"	350	355.6	6.35	54.69	5.2	P0115(ISO)
16"	400	406.4	6.35	62.65	4.6	P0116(ISO)
18"	450	457.0	6.35	70.57	4.0	P0117(ISO)
20"	500	508.0	6.35	78.56	3.6	P0118(ISO)
24"	600	610.0	6.35	94.53	3.0	P0119(ISO)

ASTM A53 ERW steel pipe

Available size for Sch40 pipe

Size			Thickness	Mass	Test pressure	Ref. No.
NPS	DN	OD (mm)	T (mm)	kg/m	MPa	
1/2"	15	21.3	2.77	1.27	4.8	P0121(UL/FM)
3/4"	20	26.7	2.87	1.69	4.8	P0122(UL/FM)
1"	25	33.4	3.38	2.50	4.8	P0123(UL/FM)
1-1/4"	32	42.2	3.56	3.39	9.0	P0124(UL/FM)
1-1/2"	40	48.3	3.68	4.05	9.0	P0125(UL/FM)
2"	50	60.3	3.91	5.44	17.2	P0126(UL/FM)
2-1/2"	65	73.0	5.16	8.63	17.2	P0127(UL/FM)
3"	80	88.9	5.49	11.29	17.2	P0128(UL/FM)
4"	100	114.3	6.02	16.08	15.2	P0129(UL/FM)
5"	125	141.3	6.55	21.77	13.4	P0130(UL/FM)
6"	150	168.3	7.11	28.26	12.3	P0131(UL/FM)
8"	200	219.1	8.18	42.55	10.8	P0132(UL/FM)
10"	250	273.0	9.27	60.29	9.9	P0133(UL)
12"	300	323.8	10.31	79.71	9.2	P0134(UL)
14"	350	355.6	11.13	94.55	9.0	P0135(ISO)
16"	400	406.4	12.70	123.31	9.0	P0136(ISO)
18"	450	457.0	14.27	155.81	9.0	P0137(ISO)
20"	500	508.0	15.09	183.43	8.6	P0138(ISO)
24"	600	610.0	17.48	255.43	8.3	P0139(ISO)

*For each reduction of 0.01% below the specified carbon max, an increase of 0.06 % manganese will be permitted up to a max of 1.65%.

*The total composition of five elements for Cu, Ni, Cr, Mo and V (Copper, Nickel, Chromium, Molybdenum, and Vanadium) shall not exceed 1%.

Chemical compositions(%)

C	Mn	P	S	Cu	Ni	Cr	Mo	V
≤0.30	≤ 1.20	≤0.05	≤0.045	≤0.40	≤0.40	≤0.40	≤0.15	≤0.08

Mechanical properties

Tensile strength / psi(MPa)	Yield strength / psi(MPa)	Longitudinal elongation(%)
≥60000 (415)	≥ 35000 (240)	≥ 19

*The elongation value conforms to TABLE 2 and TABLE X4.1/ X4.2, and BAOLAI refers to normal min value of 19%.

ASTM A795 ERW steel pipe

ASTM A795 ERW pipe is intended for use in water-based fire protection systems for water distribution or valve trim application, such as wet, dry, preaction, or deluge sprinkler systems.



- Certificate:** UL Listed/ FM Approved
- Standard:** ASTM A795, Type E, Grade B/ UL852
- Length:** 6m/ 5.8m/ 11.8m/ 12m, customized
- End:** Plain (square cut)/ beveled to 30°/ roll groove as AWWA C606/ NPT thread as ANSIB1.20.1/ BSPT as ISO 7-1
- Surface:** Red paint/ red epoxy resin or polyester/ hot dip galvanized/ black paint, etc.

Available size for Sch10 pipe (Light-weight pipe)

Size			Thickness	Mass	Test pressure	Ref. No.
NPS	DN	OD (mm)	T (mm)	kg/m	MPa	
3/4"	20	26.7	2.11	1.28	4.8	P0202(UL/FM)
1"	25	33.4	2.77	2.09	4.8	P0203(UL/FM)
1-1/4"	32	42.2	2.77	2.69	6.9	P0204(UL/FM)
1-1/2"	40	48.3	2.77	3.11	6.9	P0205(UL/FM)
2"	50	60.3	2.77	3.93	6.9	P0206(UL/FM)
2-1/2"	65	73.0	3.05	5.26	6.9	P0207(UL/FM)
3"	80	88.9	3.05	6.46	6.9	P0208(UL/FM)
4"	100	114.3	3.05	8.37	8.3	P0209(UL/FM)
5"	125	141.3	3.40	11.56	8.3	P0210(UL/FM)
6"	150	168.3	3.40	13.83	6.9	P0211(UL/FM)
8"	200	219.1	4.78	25.26	5.5	P0212(UL/FM)
10"	250	273.1	4.78	31.63	4.8	P0213(UL)

Note: For pipe NPS 8" and NPS 10", the thickness follows ASTM A795, not Sch10 of ASME B36.10M (8"/3.76mm, 10"/4.19mm).

ASTM A795 ERW steel pipe

Available size for Sch40 pipe (Standard-weight pipe)

Size			Thickness	Mass	Test pressure	Ref. No.
NPS	DN	OD(mm)	T(mm)	kg/m	MPa	
1/2"	15	21.3	2.77	1.27	4.8	P0221(ISO)
3/4"	20	26.7	2.87	1.69	4.8	P0222(ISO)
1"	25	33.4	3.38	2.50	4.8	P0223(UL)
1-1/4"	32	42.2	3.56	3.39	6.9	P0224(UL)
1-1/2"	40	48.3	3.68	4.05	6.9	P0225(UL)
2"	50	60.3	3.91	5.44	6.9	P0226(UL)
2-1/2"	65	73.0	5.16	8.63	6.9	P0227(UL)
3"	80	88.9	5.49	11.29	6.9	P0228(UL)
4"	100	114.3	6.02	16.08	8.3	P0229(UL)
5"	125	141.3	6.55	21.77	8.3	P0230(UL)
6"	150	168.3	7.11	28.26	8.3	P0231(UL)
8"	200	219.1	7.04	36.82	8.3	P0232(ISO)
10"	250	273.1	7.80	51.03	6.9	P0233(ISO)

Note: For pipe NPS 8" and NPS 10", the thickness follows Sch30 of ASME B36.10M, not Sch40 of ASME B36.10M (8"/8.18mm,10"/9.27mm).

Permissible variations

Size			OD tolerance	THK tolerance		Remark
NPS	DN	OD (mm)	mm	Sch10(mm)	Sch40 (mm)	
1/2"	15	21.3	20.9~21.7	/	2.42~3.32	1.For pipe ≤ NPS 1-1/2", OD tolerance is ±0.4mm. 2.For pipe ≥ NPS 2", OD tolerance is ±1%. 3. The min THK at any point is not more than 12.5%. 4. The max THK is not defined in ASTM A795, and BAOLAI refers to ASTM A530 with 20%, 22.5% or 15% as t/ D ratio.
3/4"	20	26.7	26.3~27.1	1.85~2.53	2.51~3.44	
1"	25	33.4	33.0~33.8	2.42~3.32	2.96~4.06	
1-1/4"	32	42.2	41.8~42.6	2.42~3.32	3.12~4.27	
1-1/2"	40	48.3	47.9~48.7	2.42~3.32	3.22~4.42	
2"	50	60.3	59.7~60.9	2.42~3.32	3.42~4.69	
2-1/2"	65	73.0	72.3~73.7	2.67~3.66	4.52~6.19	
3"	80	88.9	88.0~89.8	2.67~3.74	4.80~6.31	
4"	100	114.3	113.2~115.4	2.67~3.74	5.27~7.37	
5"	125	141.3	139.9~142.7	2.98~4.17	5.73~8.02	
6"	150	168.3	166.6~170.0	2.98~4.17	6.22~8.71	
8"	200	219.1	216.9~221.3	4.18~5.86	6.16~8.62	
10"	250	273.1	270.4~275.8	4.18~5.86	6.83~9.56	

Note:

- For exact length (cut length), length tolerance is -0.0mm/+6.0mm, as ASTM A530.
- The weight (mass) tolerance of unit pipe is ±5%.
- For pipe ≤ NPS 4", weight is measured as per bundle. For pipe >NPS 4", measured as per individual length.

ASTM A135 ERW steel pipe

ASTM A135 ERW pipe is intended for conveying gas, vapor, water or other liquid. And it is also used in water based fire protection systems for water distribution or valve trim application, such as wet, dry, preaction, or deluge sprinkler systems.



- Certificate: FM Approved
- Standard: ASTM A135, Grade B/ UL 852
- Length: 6m/ 5.8m/ 11.8m/ 12m, customized
- End: Plain (square cut)/ beveled to 30°/ roll groove as AWWA C606/ NPT thread as ANSI B1.20.1/ BSPT as ISO 7-1
- Surface: Red paint/ red epoxy resin or polyester/ hot dip galvanized/ black paint, etc.

Available size for Light wall steel pipe (Sch10 pipe)

Size			Thickness	Mass	Test pressure	Ref. No.
NPS	DN	OD (mm)	T (mm)	kg/m	MPa	
3/4"	20	26.7	2.11	1.28	17.2	P0302(FM)
1"	25	33.4	2.77	2.09	17.2	P0303(FM)
1-1/4"	32	42.2	2.77	2.69	17.2	P0304(FM)
1-1/2"	40	48.3	2.77	3.11	16.5	P0305(FM)
2"	50	60.3	2.77	3.93	13.1	P0306(FM)
2-1/2"	65	73.0	3.05	5.26	11.7	P0307(FM)
3"	80	88.9	3.05	6.46	9.6	P0308 (FM)
4"	100	114.3	3.05	8.37	7.6	P0309(FM)
5"	125	141.3	3.40	11.56	6.9	P0310(FM)

Note: Pipe furnished to Sch10 shall be plain end only. All inside and outside cutting burrs are removed.

ASTM A135 ERW steel pipe

Available size for Sch40 pipe

Size			Thickness	Mass	Test pressure	Ref.No.
NPS	DN	OD (mm)	T(mm)	kg/m	MPa	
1/2"	15	21.3	2.77	1.27	17.2	P0321
3/4"	20	26.7	2.87	1.69	17.2	P0322
1"	25	33.4	3.38	2.50	17.2	P0323
1-1/4"	32	42.2	3.56	3.39	17.2	P0324
1-1/2"	40	48.3	3.68	4.05	17.2	P0325
2"	50	60.3	3.91	5.44	17.2	P0326
2-1/2"	65	73.0	5.16	8.63	17.2	P0327
3"	80	88.9	5.49	11.29	17.2	P0328
4"	100	114.3	6.02	16.08	15.2	P0329
5"	125	141.3	6.55	21.77	13.4	P0330
6"	150	168.3	7.11	28.26	12.2	P0331
8"	200	219.1	8.18	42.55	10.8	P0332
10"	250	273.0	9.27	60.29	9.8	P0333
12"	300	323.8	10.31	79.71	9.2	P0334
14"	350	355.6	11.13	94.55	9.0	P0335
16"	400	406.4	12.70	123.31	9.0	P0336
18"	450	457.0	12.70	139.16	8.0	P0337
20"	500	508.0	12.70	155.13	7.2	P0338
24"	600	610.0	12.70	187.07	6.0	P0339

- Note:**
1. The form of Sch40 pipe is not listed in ASTM 135, and BAOLAI refers to ASME B36.10M.
2. The wall thickness is up to 0.5" (12.70 mm) as ASTM A135. For size 18", 20" and 24", the thickness follows XS, not Sch40.

EN10217 ERW steel tube



EN10217-1 is specification of non-alloy steel tube for pressure purposes. The tube is suitable for water lines (Cold & Hot), firefighting pipeline, HVAC lines, etc.

EN10217-2 is specification of non-alloy steel tube with specified elevated temperature properties for pressure purposes. The tube is suitable for water lines (Cold & Hot), firefighting pipeline, HVAC lines, etc.

EN10217-1	
•Certificate :	ISO
•Standard:	EN10217-1, electric welded, P195TR1, P235TR1, P265TR1, P195TR2, P235TR2, P265TR2
•Length:	6m/ 5.8m/ 11.8m/ 12m, customized
•End:	Plain(square cut)/ beveled to 30°/ roll groove as ISO 6182-12/ BSPT thread as ISO 7-1/ NPT thread as ANSI B1.20.1
•Surface:	Red paint/ red epoxy resin or polyester/ hot dip galvanized/ black paint, etc.

EN10217-2	
•Certificate:	ISO
•Standard:	EN10217-2, electric welded, P195GH, P235GH, P265GH, 16Mo3
•Length:	6m/ 5.8m/ 11.8m/ 12m, customized
•End:	Plain(square cut)/ beveled to 30°/ roll groove as ISO 6182-12/ BSPT thread as ISO 7-1/ NPT thread as ANSI B1.20.1
•Surface:	Red paint/ red epoxy resin or polyester/ hot dip galvanized/ black paint, etc.

Available size

Size			Thickness(mm)													
Inch	DN	OD (mm)	2.6	2.9	3.2	3.6	4.0	4.5	5.0	5.6	6.3	7.1	8.0	8.8	10.0	11.0
1/2"	15	21.3	2.6	2.9	3.2	3.6	4.0	4.5	5.0	5.6	6.3	7.1	8.0	8.8	10.0	11.0
3/4"	20	26.7	2.6	2.9	3.2	3.6	4.0	4.5	5.0	5.6	6.3	7.1	8.0	8.8	10.0	11.0
1"	25	33.4	2.6	2.9	3.2	3.6	4.0	4.5	5.0	5.6	6.3	7.1	8.0	8.8	10.0	11.0
1-1/4"	32	42.2	2.6	2.9	3.2	3.6	4.0	4.5	5.0	5.6	6.3	7.1	8.0	8.8	10.0	11.0
1-1/2"	40	48.3	2.6	2.9	3.2	3.6	4.0	4.5	5.0	5.6	6.3	7.1	8.0	8.8	10.0	11.0
2"	50	60.3	2.6	2.9	3.2	3.6	4.0	4.5	5.0	5.6	6.3	7.1	8.0	8.8	10.0	11.0
2-1/2"	65	76.1	2.6	2.9	3.2	3.6	4.0	4.5	5.0	5.6	6.3	7.1	8.0	8.8	10.0	11.0
3"	80	88.9	2.6	2.9	3.2	3.6	4.0	4.5	5.0	5.6	6.3	7.1	8.0	8.8	10.0	11.0
4"	100	114.3	2.6	2.9	3.2	3.6	4.0	4.5	5.0	5.6	6.3	7.1	8.0	8.8	10.0	11.0
5"	125	139.7	2.6	2.9	3.2	3.6	4.0	4.5	5.0	5.6	6.3	7.1	8.0	8.8	10.0	11.0
6"	150	168.3	2.6	2.9	3.2	3.6	4.0	4.5	5.0	5.6	6.3	7.1	8.0	8.8	10.0	11.0
8"	200	219.1	2.6	2.9	3.2	3.6	4.0	4.5	5.0	5.6	6.3	7.1	8.0	8.8	10.0	11.0
10"	250	273.0	2.6	2.9	3.2	3.6	4.0	4.5	5.0	5.6	6.3	7.1	8.0	8.8	10.0	11.0

Seamless steel pipe

Seamless steel pipe is formed by drawing a solid billet without welding or seam, and the advantage is the ability of withstanding higher pressure. It is mainly used in power plant, boiler, or firefighting pipeline where the piping must transport fluid and gas in high temperature and pressure level.



BAOLAI provides Seamless steel pipe for fire fighting as standard:

- **ASTM A106/A106M-18** Standard Specification for Seamless Carbon Steel Pipe for High-Temperature Service
- **ASTM A53/A53M-20** Standard Specification for Pipe, Steel, Black and Hot-Dipped, Zinc-Coated, Welded and Seamless
- **ASTM A795/A795M-21** Standard Specification for Black and Hot-Dipped Zinc-Coated (Galvanized) Welded and Seamless Steel Pipe for Fire Protection Use
- **EN 10255:2004** Non-alloy steel tubes suitable for welding and threading
- **EN 10216-1:2013** Non-alloy steel tubes with specified room temperature properties
- **ASTM A312/A312M** Standard Specification for Seamless, Welded, and Heavily Cold Worked Austenitic Stainless Steel Pipes

ASTM A106 seamless steel pipe

ASTM A106 is seamless steel pipe specification for high-temperature service. The pipe is commonly used in the construction of power plant, boiler, firefighting pipeline and ship where the piping must transport fluids and gases in higher temperatures and pressure levels.



- **Certificate:** ISO
- **Standard:** ASTM A106, Grade B
- **Length:** 6m/ 5.8m/ 11.8m/ 12m, customized
- **End:** Plain(square cut)/ beveled to 30°/ roll groove as AWWA C606/ NPT thread as ANSI B1.20.1/ BSPT as ISO 7-1
- **Surface:** Red paint/ red epoxy resin or polyester/ hot dip galvanized/ black paint, etc.

Available size

Size			Sch40 pipe		Sch80 pipe	
NPS	DN	OD (mm)	Thickness(mm)	Mass(kg/m)	Thickness(mm)	Mass(kg/m)
1/2"	15	21.3	2.77	1.27	3.73	1.62
3/4"	20	26.7	2.87	1.69	3.91	2.20
1"	25	33.4	3.38	2.50	4.55	3.24
1-1/4"	32	42.2	3.56	3.39	4.85	4.47
1-1/2"	40	48.3	3.68	4.05	5.08	5.41
2"	50	60.3	3.91	5.44	5.54	7.48
2-1/2"	65	73.0	5.16	8.63	7.01	11.41
3"	80	88.9	5.49	11.29	7.62	15.27
4"	100	114.3	6.02	16.08	8.56	22.32
5"	125	141.3	6.55	21.77	9.53	30.97
6"	150	168.3	7.11	28.26	10.97	42.56
8"	200	219.1	8.18	42.55	12.70	64.64
10"	250	273.0	9.27	60.29	15.09	95.98
12"	300	323.8	10.31	79.71	17.48	132.05
14"	350	355.6	11.13	94.55	19.05	158.11
16"	400	406.4	12.70	123.31	21.44	203.54
18"	450	457.0	14.27	155.81	23.83	254.57
20"	500	508.0	15.09	183.43	26.19	311.19
24"	600	610.0	17.48	255.43	30.96	442.11

ASTM A53 seamless steel pipe

ASTM A53 specification also covers seamless steel pipe. The pipe is intended for pressure and mechanical applications and is also acceptable for ordinary uses in oil, gas, steam, water and air lines. It is suitable for welding, bending and flanging.



- Certificate:** ISO
- Standard:** ASTM A53, Type S, Grade B/ UL 852
- Length:** 6m/ 5.8m/ 11.8m/ 12m, customized
- End:** Plain(square cut)/ beveled to 30°/ roll groove as ISO 6182-12 / BSPT thread as ISO 7-1/ NPT thread as ANSI B1.20.1
- Surface:** Red paint/ red epoxy resin or polyester/ hot dip galvanized/ black paint, etc.

Available size

Size			Sch40 pipe		Sch80 pipe	
NPS	DN	OD (mm)	Thickness(mm)	Mass(kg/m)	Thickness(mm)	Mass(kg/m)
1/2"	15	21.3	2.77	1.27	3.73	1.62
3/4"	20	26.7	2.87	1.69	3.91	2.20
1"	25	33.4	3.38	2.50	4.55	3.24
1-1/4"	32	42.2	3.56	3.39	4.85	4.47
1-1/2"	40	48.3	3.68	4.05	5.08	5.41
2"	50	60.3	3.91	5.44	5.54	7.48
2-1/2"	65	73.0	5.16	8.63	7.01	11.41
3"	80	88.9	5.49	11.29	7.62	15.27
4"	100	114.3	6.02	16.08	8.56	22.32
5"	125	141.3	6.55	21.77	9.53	30.97
6"	150	168.3	7.11	28.26	10.97	42.56
8"	200	219.1	8.18	42.55	12.70	64.64
10"	250	273.0	9.27	60.29	15.09	95.98
12"	300	323.8	10.31	79.71	17.48	132.05
14"	350	355.6	11.13	94.55	19.05	158.11
16"	400	406.4	12.70	123.31	21.44	203.54
18"	450	457.0	14.27	155.81	23.83	254.57
20"	500	508.0	15.09	183.43	26.19	311.19
24"	600	610.0	17.48	255.43	30.96	442.11

ASTM A795 seamless steel pipe

ASTM A795 specification also covers seamless steel pipe, which is intended for use in water based fire protection systems for water distribution or valve trim application, such as wet, dry, preaction, or deluge sprinkler systems.



- Certificate:** ISO
- Standard:** ASTM A795, Type S, Grade B
- Length:** 6m/ 5.8m/ 11.8m/ 12m, customized
- End:** Plain (square cut)/ beveled to 30°/ roll groove as AWWA C606 / NPT thread as ANSI B1.20.1/ BSPT as ISO 7-1
- Surface:** Red paint/ red epoxy resin or polyester/ hot dip galvanized/ black paint, etc.

Available size for Sch10 pipe (Standard-weight pipe)

Size			Thickness	Mass
NPS	DN	OD(mm)	T (mm)	kg/m
3/4"	20	26.7	2.11	1.28
1"	25	33.4	2.77	2.09
1-1/4"	32	42.2	2.77	2.69
1-1/2"	40	48.3	2.77	3.11
2"	50	60.3	2.77	3.93
2-1/2"	65	73.0	3.05	5.26
3"	80	88.9	3.05	6.46
4"	100	114.3	3.05	8.37
5"	125	141.3	3.40	11.56
6"	150	168.3	3.40	13.83
8"	200	219.1	4.78	25.26
10"	250	273.1	4.78	31.63

Note: For pipe NPS 8" and NPS 10", the thickness follows ASTM A795, not Sch10 of ASME B36.10M (8"/3.76mm, 10"/4.19mm).

ASTM A795 Seamless steel pipe

Available size for Sch40 pipe (Standard-weight pipe)

Size			Thickness	Mass
NPS	DN	OD(mm)	T (mm)	kg/m
1/2"	15	21.3	2.77	1.27
3/4"	20	26.7	2.87	1.69
1"	25	33.4	3.38	2.50
1-1/4"	32	42.2	3.56	3.39
1-1/2"	40	48.3	3.68	4.05
2"	50	60.3	3.91	5.44
2-1/2"	65	73.0	5.16	8.63
3"	80	88.9	5.49	11.29
4"	100	114.3	6.02	16.08
5"	125	141.3	6.55	21.77
6"	150	168.3	7.11	28.26
8"	200	219.1	7.04	36.82
10"	250	273.1	7.80	51.03

Note: For pipe NPS 8" and NPS 10", the thickness follows Sch30 of ASME B36.10M, not Sch40 of ASME B36.10M (8"/8.18mm, 10"/9.27mm).

Permissible variations

Size			OD tolerance	THK tolerance		Remark
NPS	DN	OD (mm)	mm	Sch10(mm)	Sch40 (mm)	
1/2"	15	21.3	20.9~21.7	/	2.42~3.32	1.For pipe ≤ NPS 1-1/2", OD tolerance is ±0.4mm. 2.For pipe ≥ NPS 2", OD tolerance is ±1%. 3. The min THK at any point is not more than 12.5%. 4. The max THK is not defined in ASTM A795, and BAOLAI refers to ASTM A530 with 20%, 22.5% or 15% as t/ D ratio.
3/4"	20	26.7	26.3~27.1	1.85~2.53	2.51~3.44	
1"	25	33.4	33.0~33.8	2.42~3.32	2.96~4.06	
1-1/4"	32	42.2	41.8~42.6	2.42~3.32	3.12~4.27	
1-1/2"	40	48.3	47.9~48.7	2.42~3.32	3.22~4.42	
2"	50	60.3	59.7~60.9	2.42~3.32	3.42~4.69	
2-1/2"	65	73.0	72.3~73.7	2.67~3.66	4.52~6.19	
3"	80	88.9	88.0~89.8	2.67~3.74	4.80~6.31	
4"	100	114.3	113.2~115.4	2.67~3.74	5.27~7.37	
5"	125	141.3	139.9~142.7	2.98~4.17	5.73~8.02	
6"	150	168.3	166.6~170.0	2.98~4.17	6.22~8.71	
8"	200	219.1	216.9~221.3	4.18~5.86	6.16~8.62	
10"	250	273.1	270.4~275.8	4.18~5.86	6.83~9.56	

Note:

- 1.For exact length (cut length), length tolerance is -0.0mm/+6.0mm,as ASTM A530.
- 2.The weight (mass) tolerance of unit pipe is ±5%.
- 3.For pipe ≤ NPS 4", weight is measured as per bundle. For pipe >NPS 4", measured as per individual length.

DUCTILE IRON GROOVED FITTINGS AND COUPLINGS



Rigid Coupling



Flexible Coupling



90° Elbow



45° Elbow



22.5° Elbow



11.5° Elbow



Equal Tee



Reducing Tee



THD Reducing Tee



THD Reducing Cross



Reducing Cross



Equal Cross



THD Eccentric Reducer



THD Concentric Reducer



Concentric Reducer



Eccentric Reducer



Mechanical Tee



THD Mechanical Tee



U-bolt Mechanical



Grooved Flange



Flange



End Cap



Gasket Ring



Bolts And Nuts

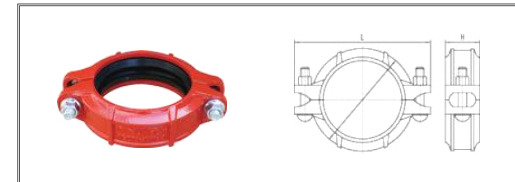
Surface treatment:

P: Painting B: Black E: Electroplate

S: Epoxy J: Galvanization+Epoxy G: Galvanization D: Dacromet

Note: Due to the numerous pipe fittings, only some of the product specifications are shown below.

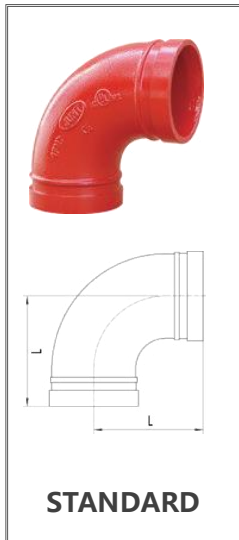
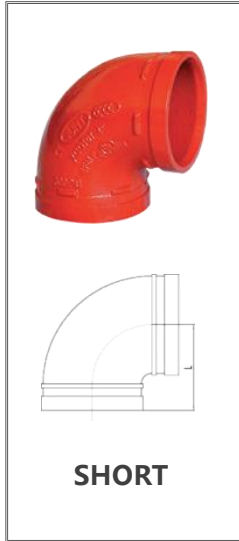
Rigid Coupling/ Flexible Coupling



According to different situations, the appearance can be dealt with epoxy powder, galvanized, paint, dacromet or your requirements.

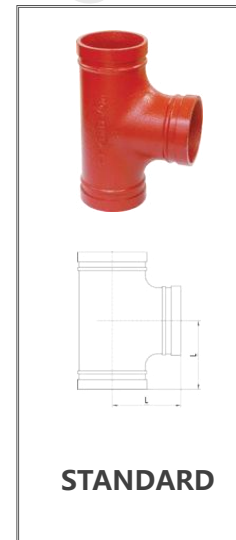
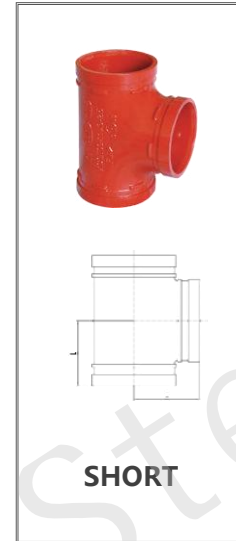
Nominal Size (mm/ in)	Pipe O.D (mm/ in)	Working Pressure (PSI/ Mpa)	Bolt Size No.-Size (mm)	Dimensions (mm/ in)		
				Φ	L	H
25	33.7	300		55.6	98	44
1	1.327	2.07	2-M10*45	2.188	3.858	1.732
32	42.4	300		66	107	44
1 1/4	1.669	2.07	2-M10*45	2.598	4.213	1.732
40	48.3	300		74	115	44
1 1/2	1.9	2.07	2-M10*45	2.913	4.527	1.732
50	60.3	300		88.4	125	46
2	2.374	2.07	2-M10*55	3.480	4.921	1.732
65	73.0	300		102.2	140	46
2 1/2	2.875	2.07	2-M10*55	4.024	5.512	1.772
65	76.1	300		102.2	140	46
2 1/2	3	2.07	2-M10*55	4.024	5.512	1.772
80	88.9	300		117.4	154	46
3	3.5	2.07	2-M10*60	4.622	6.063	1.772
100	108	300		138.8	184	48
4	4.25	2.07	2-M12*65	5.466	7.244	1.889
100	114.3	300		146.6	190	48
4	4.5	2.07	2-M12*65	5.772	7.480	1.889
125	133	300		158	212	48
5	5.25	2.07	2-M12*75	6.220	8.346	1.889
125	139.7	300		171.2	220	48
5	5.5	2.07	2-M12*75	6.740	8.661	1.889
125	141.3	300		171.2	220	48
5	5.56	2.07	2-M12*75	6.740	8.661	1.889
150	159	300		192	240	48
6	6.25	2.07	2-M12*75	7.559	9.448	2.008
150	165.1	300		196.2	244	48
6	6.5	2.07	2-M12*75	7.724	9.606	2.008
150	168.3	300		199.4	246	48
6	6.625	2.07	2-M12*75	7.850	9.685	2.008
200	219.1	300		256.4	326	58
8	8.625	2.07	2-M16*85	10.024	12.835	2.283
250	273	300		316	426	64
10	10.748	2.07	2-M20*100	12.441	16.771	2.520
300	323.9	300		380	470	65
12	12.75	2.07	2-M22*130	14.961	18.504	2.559

90° Elbow



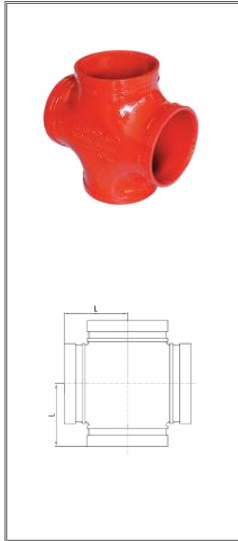
Nominal Size (mm/in)	Pipe O.D (mm/in)	Working Pressure (PSI/Mpa)	L mm/in	
			Short	Standard
25	33.7	300	57	57
1	1.327	2.07	2.244	2.24
32	42.4	300	60	70
1 1/4	1.669	2.07	2.362	2.75
40	48.3	300	60	70
1 1/2	1.900	2.07	2.362	2.75
50	60.3	300	70	83
2	2.375	2.07	2.756	3.27
65	73.0	300	76	95
2 1/2	2.875	2.07	2.992	3.74
65	76.1	300	76	95
2 1/2	3	2.07	2.992	3.74
80	88.9	300	90	108
3	3.5	2.07	3.543	4.25
100	108	300	102	127
4	4.252	2.07	4.016	5.00
100	114.3	300	102	127
4	4.5	2.07	4.016	5.00
125	133	300	122	122
5	5.25	2.07	4.803	4.80
125	139.7	300	122	140
5	5.5	2.07	4.803	5.50
125	141.3	300	122	140
5	5.56	2.07	4.803	5.50
150	159	300	140	165
6	6.25	2.07	5.512	6.50
150	165.1	300	140	165
6	6.5	2.07	5.512	6.50
150	168.3	300	140	165
6	6.625	2.07	5.512	6.50
200	219.1	300	175	197
8	8.625	2.07	6.890	7.75
250	273	300	215	229
10	10.75	2.07	8.465	9.00
300	323.9	300	230	254
12	12.75	2.07	9.055	10.00

Equal Tee



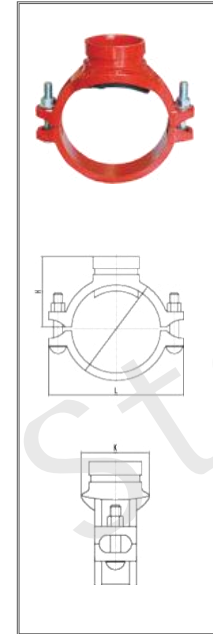
Nominal Size (mm/in)	Pipe O.D (mm/in)	Working Pressure (PSI/Mpa)	L mm/in	
			Short	Standard
25	33.7	300	57	57
1	1.327	2.07	2.244	2.24
32	42.4	300	60	70
1 1/4	1.669	2.07	2.362	2.75
40	48.3	300	60	70
1 1/2	1.900	2.07	2.362	2.75
50	60.3	300	70	83
2	2.375	2.07	2.756	3.27
65	73.0	300	76	95
2 1/2	2.875	2.07	2.992	3.74
65	76.1	300	76	95
2 1/2	3	2.07	2.992	3.74
80	88.9	300	90	108
3	3.5	2.07	3.543	4.25
100	108	300	102	127
4	4.252	2.07	4.016	5.00
100	114.3	300	102	127
4	4.5	2.07	4.016	5.00
125	133	300	122	122
5	5.25	2.07	4.803	4.80
125	139.7	300	122	140
5	5.5	2.07	4.803	5.50
125	141.3	300	122	140
5	5.56	2.07	4.803	5.50
150	159	300	140	165
6	6.25	2.07	5.512	6.50
150	165.1	300	140	165
6	6.5	2.07	5.512	6.50
150	168.3	300	140	165
6	6.625	2.07	5.512	6.50
200	219.1	300	175	197
8	8.625	2.07	6.890	7.75
250	273	300	215	229
10	10.75	2.07	8.465	9.00
300	323.9	300	230	254
12	12.75	2.07	9.055	10.00

Equal Cross



Nominal Size (mm/in)	Pipe O.D (mm/in)	Working Pressure (PSI/Mpa)	L (mm/in)
25	33.7	300	57
1	1.327	2.07	2.244
32	42.4	300	60
1 1/4	1.669	2.07	2.362
40	48.3	300	60
1 1/2	1.900	2.07	2.362
50	60.3	300	70
2	2.375	2.07	2.756
65	73.0	300	76
2 1/2	2.875	2.07	2.992
65	76.1	300	76
2 1/2	3	2.07	2.992
80	88.9	300	90
3	3.5	2.07	3.543
100	108	300	102
4	4.252	2.07	4.016
100	114.3	300	102
4	4.5	2.07	4.016
125	133	300	122
5	5.25	2.07	4.803
125	139.7	300	122
5	5.5	2.07	4.803
125	141.3	300	122
5	5.56	2.07	4.803
150	159	300	140
6	6.25	2.07	5.512
150	165.1	300	140
6	6.5	2.07	5.512
150	168.3	300	140
6	6.625	2.07	5.512
200	219.1	300	175
8	8.625	2.07	6.890
250	273	300	215
10	10.75	2.07	8.465
300	323.9	300	230
12	12.75	2.07	9.055

Mechanical Tee



Nominal Size mm/in	Pipe O.D mm/in	Working Pressure PSI/Mpa	Bolt Size No. - Size mm	Dimensions mm/in				Hole Dia mm/in +1.6,0/+0.063,0
				Φ	L	K	H	
50x25	60.3x33.7	300	2-M10x60	81	116	64.5	64	38
2 1/2x1	2.375x1.327	2.07		3.189	4.567	2.539	2.520	1.496
50x32	60.3x42.4	300		81	116	64.5	68	46
2x1 1/4	2.375x1.699	2.07		3.189	4.567	2.539	2.677	1.811
50x40	60.3x48.3	300		81	116	64.5	68	46
2x1 1/2	2.375x1.90	2.07		3.189	4.567	2.539	2.677	1.811
65x25	73.0x33.7	300		98	137	73	69	38
2 1/2x1	2.875x1.327	2.07		3.858	5.394	2.874	2.717	1.496
65x32	73.0x42.4	300		98	137	73	76	46
2 1/2x1 1/4	2.875x1.669	2.07		3.858	5.394	2.874	2.992	1.811
65x40	73.0x48.3	300		98	137	73	82	51
2 1/2x1 1/2	2.875x1.90	2.07		3.858	5.394	2.874	3.228	2.007
65x25	76.1x33.7	300		98	137	73	69	38
2 1/2x1	2.996x1.327	2.07		3.858	5.394	2.874	2.717	1.496
65x32	76.1x42.4	300		98	137	73	76	46
2 1/2x1 1/4	2.996x1.669	2.07		3.858	5.394	2.874	2.992	1.811
65x40	76.1x48.3	300		98	137	73	82	51
2 1/2x1 1/2	2.996x1.90	2.07		3.858	5.394	2.874	3.228	2.007
80x25	88.9x33.7	300		113	146	80.5	69	38
3x1	3.50x1.327	2.07		4.449	5.748	3.169	2.717	1.496
80x32	88.9x42.4	300	113	146	80.5	76	46	
3x1 1/4	3.50x1.669	2.07	4.449	5.748	3.169	2.992	1.811	
80x40	88.9x48.3	300	113	146	80.5	82	51	
3x1 1/2	3.50x1.90	2.07	4.449	5.748	3.169	3.228	2.007	
80x50	88.9x60.3	300	113	146	80.5	91	61	
3x2	3.50x2.375	2.07	4.449	5.748	3.169	3.583	2.402	
100x25	108.0x33.7	300	132	166	90	70	38	
4x1	4.252x1.327	2.07	5.197	6.535	3.543	2.756	1.496	
100x32	108.0x42.4	300	132	166	90	77	46	
4x1 1/4	4.252x1.669	2.07	5.197	6.535	3.543	3.031	1.811	
100x40	108.0x48.3	300	132	166	90	83	51	
4x1 1/2	4.252x1.90	2.07	5.197	6.535	3.543	3.268	2.008	
100x50	108.0x60.3	300	132	166	90	92	61	
4x2	4.252x2.375	2.07	5.197	6.535	3.543	3.622	2.402	
100x65	108.0x76.1	300	132	166	90	112	81	
4x2 1/2	4.252x2.996	2.07	5.197	6.535	3.543	4.409	3.189	
100x25	114.3x33.7	300	138	176	93	70	38	
4x1	4.50x1.327	2.07	5.433	6.926	3.661	2.756	1.496	
100x32	114.3x42.4	300	138	176	93	77	46	
4x1 1/4	4.50x1.669	2.07	5.433	6.929	3.661	3.031	1.811	
100x40	114.3x48.3	300	138	176	93	83	51	
4x1 1/2	4.50x1.90	2.07	5.433	6.929	3.661	3.268	2.007	
100x50	114.3x60.3	300	138	176	93	92	61	
4x2	4.50x2.375	2.07	5.433	6.929	3.661	3.622	2.402	
100x65	114.3x76.1	300	138	176	93	112	81	
4x2 1/2	4.50x2.996	2.07	5.433	6.929	3.661	4.409	3.189	
100x80	114.3x88.9	300	138	176	93	118	86	
4x3	4.50x3.50	2.07	5.433	6.929	3.661	4.646	3.386	
125x25	139.7x33.7	300	164	206	105	70	38	
5x1	5.50x1.327	2.07	6.457	8.110	4.144	2.756	1.496	
125x32	139.7x42.4	300	164	206	105	77	46	
5x1 1/4	5.50x1.669	2.07	6.457	8.110	4.144	3.031	1.811	
125x40	139.7x48.3	300	164	206	105	83	51	
5x1 1/2	5.50x1.90	2.07	6.457	8.110	4.144	3.268	2.008	
125x50	139.7x60.3	300	164	206	106	92	61	
5x2	5.50x2.375	2.07	6.457	8.110	4.173	3.622	2.402	
125x65	139.7x76.1	300	164	206	106	112	81	
5x2 1/2	5.50x2.996	2.07	6.457	8.110	4.173	4.409	3.189	
125x80	139.7x88.9	300	164	206	106	118	86	
5x3	5.50x3.50	2.07	6.457	8.110	4.173	4.646	3.386	



Concentric Reducer

Nominal Size mm/in	Pipe O.D mm/in	Working Pressure PSI/Mpa	L mm/in	Nominal Size mm/in	Pipe O.D mm/in	Working Pressure PSI/Mpa	L mm/in
50x25 2x1	60.3x33.7 2.375x1.327	300 2.07	60 2.362	100x80 4x3	108x88.9 4.252x3.5	300 2.07	76 2.99
50x32 2x1 1/4	60.3x42.4 2.375x1.669	300 2.07	64 2.62	100x50 4x2	114.3x60.3 1.5x2.374	300 2.07	76 2.99
50x40 2x1 1/2	60.3x48.3 2.375x1.902	300 2.07	64 2.62	100x65 4x2 1/2	114.3x76.1 4.5x2.996	300 2.07	76 2.99
65x25 2 1/2x1	73.0x33.7 2.875x1.327	300 2.07	64 2.62	100x80 4x3	114.3x88.9 1.5x3.5	300 2.07	76 2.99
65x32 2 1/2x1 1/4	73.0x42.4 2.875x1.669	300 2.07	64 2.62	125x25 5x1	133x33.7 5.236x1.32	300 2.07	102 4.02
65x40 2 1/2x1 1/2	73.0x48.3 2.875x1.902	300 2.07	64 2.62	125x50 5x2	133x60.3 5.236x2.37	300 2.07	102 4.016
65x50 2 1/2x2	73.0x60.3 2.875x2.375	300 2.07	64 2.62	125x65 5x2 1/2	133x76.1 5.236x2.99	300 2.07	102 4.016
65x25 2 1/2x1	76.1x33.7 2.996x1.327	300 2.07	64 2.62	125x80 5x3	133x88.9 5.236x3.5	300 2.07	102 4.016
65x32 2 1/2x1 1/4	76.1x42.4 2.996x1.669	300 2.07	64 2.62	125x100 5x4	133x108 5.236x4.25	300 2.07	102 4.016
65x40 2 1/2x1 1/2	76.1x48.3 2.996x1.902	300 2.07	64 2.62	125x100 5x4	133x114.3 5.236x4.5	300 2.07	102 4.016
65x50 2 1/2x2	76.1x60.3 2.996x2.375	300 2.07	64 2.62	125x50 5x2	139.7x60.3 5.5x2.374	300 2.07	102 4.016
80x25 3x1	88.9x33.7 3.5x1.327	300 2.07	64 2.62	125x65 5x2 1/2	139.7x76.1 5.5x2.996	300 2.07	102 4.016
80x32 3x1 1/4	88.9x42.4 3.5x1.669	300 2.07	64 2.62	125x80 5x3	139.7x88.9 5.5x3.5	300 2.07	102 4.016
80x40 3x1 1/2	88.9x48.3 3.5x1.902	300 2.07	64 2.62	125x100 5x4	139.7x88.9 5.5x3.5	300 2.07	102 4.016
80x50 3x2	88.9x60.3 3.5x2.374	300 2.07	64 2.52	125x100 5x4	139.7x108 5.5x4.252	300 2.07	102 4.016
80x65 3x2 1/2	88.9x76.1 3.5x2.996	300 2.07	64 2.52	125x100 5x4	139.7x114.3 3	300 2.07	102 4.016
100x50 4x2	108x60.3 4.252x2.374	300 2.07	76 2.99	125x50 5x2	141.3x60.3 5.56x2.374	300 2.07	102 4.016
100x65 4x2 1/2	108x76.1 4.252x2.996	300 2.07	76 2.99	125x65 5x2 1/2	141.3x76.1 5.56x2.996	300 2.07	102 4.016



End Cap

Nominal Size mm/in	Pipe O.D mm/in	Working Pressure PSI/Mpa	mm/in
25	33.7	300	24
1	1.327	2.07	0.945
32	42.4	300	24
1 1/4	1.669	2.07	0.945
40	48.3	300	24
1 1/2	1.900	2.07	0.945
50	60.3	300	26
2	2.375	2.07	1.024
65	73.0	300	28
2 1/2	2.875	2.07	1.102
65	76.1	300	28
2 1/2	3	2.07	1.102
80	88.9	300	28
3	3.5	2.07	1.102
100	108	300	28
4	4.252	2.07	1.102
100	114.3	300	28
4	4.5	2.07	1.102
125	133	300	28
5	5.25	2.07	1.102
125	139.7	300	28
5	5.5	2.07	1.102
125	141.3	300	28
5	5.56	2.07	1.102
150	159	300	28
6	6.25	2.07	1.102
150	165.1	300	28
6	6.5	2.07	1.102
150	168.3	300	28
6	6.625	2.07	1.102
200	219.1	300	36
8	8.625	2.07	1.417
250	273	300	36
10	10.75	2.07	1.417

Fire Fighting Accessories



Flanged OS&Y Gate Valve



Grooved OS&Y Gate Valve



Flanged NRS Gate Valve



Flanged OS&Y Gate Valve



Grooved Butterfly Valve



Vertical In-line Fire Pump



Wet Barrel Fire Hydrant



Dry Barrel Fire Hydrant



K5.6 Upright Sprinkler



EMT Conduit Pipe



IMC Conduit Pipe



EMT 90° Elbow



EMT 45° Elbow



EMT Set Screw Connector



EMT Compression Connector



IMC Conduit 90° Elbow



Rigid Conduit 45° Elbow



Rigid Coupling

Note: Only some of the products are shown, if you need anything else please check the website (www.baolaisteel.com) or contact us (info@baolaisteel.com) by email.